

DAINTREE LIFE

BUSINESS PARTNERSHIPS PROGRAM



How your business can expand and create new Australian rainforest every year. Join the journey with us and make a real difference today.

500,000 trees by 2030

PARTNERSHIP PROPOSAL 2023



Daintree Life
planting for the future



DAINTREE LIFE

WHAT WE DO

TRANSFORMING WEEDS INTO RAINFOREST

Our mission is simple - to target weed-filled areas within the Daintree National Park and surrounds, replace with indigenous rainforest planting to eliminate weeds forever, and increase habitat and food resource for the iconic wildlife in the region.



LAND PREPARATION

After surveying and gaining permission from relevant landholders, our next step is to use mechanical means to slash down the bulk of the weed burden. This is followed by a combination of two applications of two herbicides to eliminate the weeds. At the same time, trees are ordered from our local nurseries.



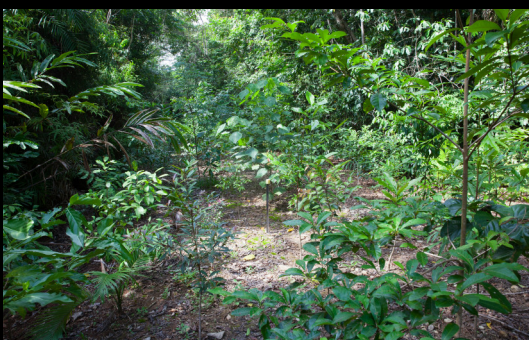
AUGURING HOLES

Once we have a weed-free area, we mark out and augur holes at a close distance of 1.2m apart - one or two days before planting. This close stem-centre planting aids in rapid canopy formation - shutting out light to emerging weeds - and cessation of all herbicide use in just 12-18 months.



PLANTING NEW TREES

The best bit. Everyone loves planting. With no holes to dig, it is simply a matter of tapping out the trees from their pots, planting them, and firming down the loose soil. Planting is done by us, us and landholders, or large community plantings of 20-50 people by locals or via corporate events.



AFTERCARE & GROWTH

Planting is not the end of the journey. Careful after-care to remove weeds eliminates competition, ensuring rapid growth of the young trees. Depending upon the species mix, we see rapid canopy formation, with some species reaching 8m in height in just 3-4 years. New rainforest is now growing.

DAINTREE LIFE

OUR CURRENT MAJOR PROJECT

BELLS ROAD, NEWELL, IN FAR NORTH QUEENSLAND

Restoring endangered ecosystems

Our latest exciting project (starting July 2023) is to plant out stage one of 33,000 trees on five hectares of old grazing land to fully restore three endangered ecosystems back to original paperbark swamp with a vine rainforest understory. This will create an area of extensive and increased habitat, and significantly increase local food resource for a multitude of species - including 12 vulnerable and endangered listed species recorded in the area.



Aerial shots showing stages one and two (of five) of the planting area.

Shown below are just three of the species we expect to move into the new forest and wetland area, and three of the eighty species of tree we will be planting.



Brown goshawk



Macleay's fig-parrot



Australian lacelid frog



Pink euodia



Moreton bay ash



Golden penda

DAINTREE LIFE

BUSINESS PARTNERSHIPS PROGRAM

Make a difference today. Listed below is a quick summary of our tiered packages on a per annum basis. If an annual partnership does not suit, we can easily tailor a one-off tree sponsorship to suit your business.



\$500 - \$999 p.a. Our green tier package will plant 40 - 80 trees (at \$12.50 per tree) which replants 58 - 115 square metres of rainforest. Contact us for benefits and exposure for your business.



\$1000 - \$2499 p.a. Our bronze tier package will plant 80 - 200 trees (at \$12.50 per tree) which replants 115 - 288 square metres of rainforest. Contact us for benefits and exposure for your business.



\$2500 - \$4999 p.a. Our silver tier package will plant 200 - 400 trees (at \$12.50 per tree) which replants 288 - 576 square metres of rainforest. Contact us for benefits and exposure for your business.



\$5,000 - \$9,999 p.a. Our gold tier package will plant 400 - 800 trees (at \$12.50 per tree) which replants 576 - 1152 square metres of rainforest. Contact us for benefits and exposure for your business.



\$10,000 + p.a. Our diamond tier package will plant 800 + trees (at \$12.50 per tree) which replants 1152 + square metres of rainforest. Contact us for benefits and exposure for your business.



A once-off donation is a valuable way to expand habitat and vital food resource for animals like cassowaries. At \$12.50 per tree, you can nominate exactly the amount that suits your business. Contact us for more details.

1 hectare = 6944 trees = \$86,800

Please note that \$12.50 per tree covers all costs such as land preparation, auguring holes, tree purchase, tree planting and three years of aftercare weeding to ensure rapid and successful growth.

DAINTREE LIFE

CONTACT US TODAY

Partners for growth. To find out more about how your business can be involved in positive change, talk to us about how we can tailor a package and benefit options to suit your organisation. We look forward to working with you for a positive future, via our charity arm, sixteen degrees south.



email:	admin@daintreelife.com.au
phone:	07 4098 9056
web	www.daintreelife.com.au
facebook:	www.facebook.com/DaintreeLife
instagram:	www.instagram.com/daintreelife
Daintree Life ABN:	78 971 564 919
Sixteen Degrees South Inc. ABN:	16 319 497 161
Incorporated Association:	IA4608605



Dave Pinson

Director

Principal Contractor



Connie Pinson

Director

Partnerships

